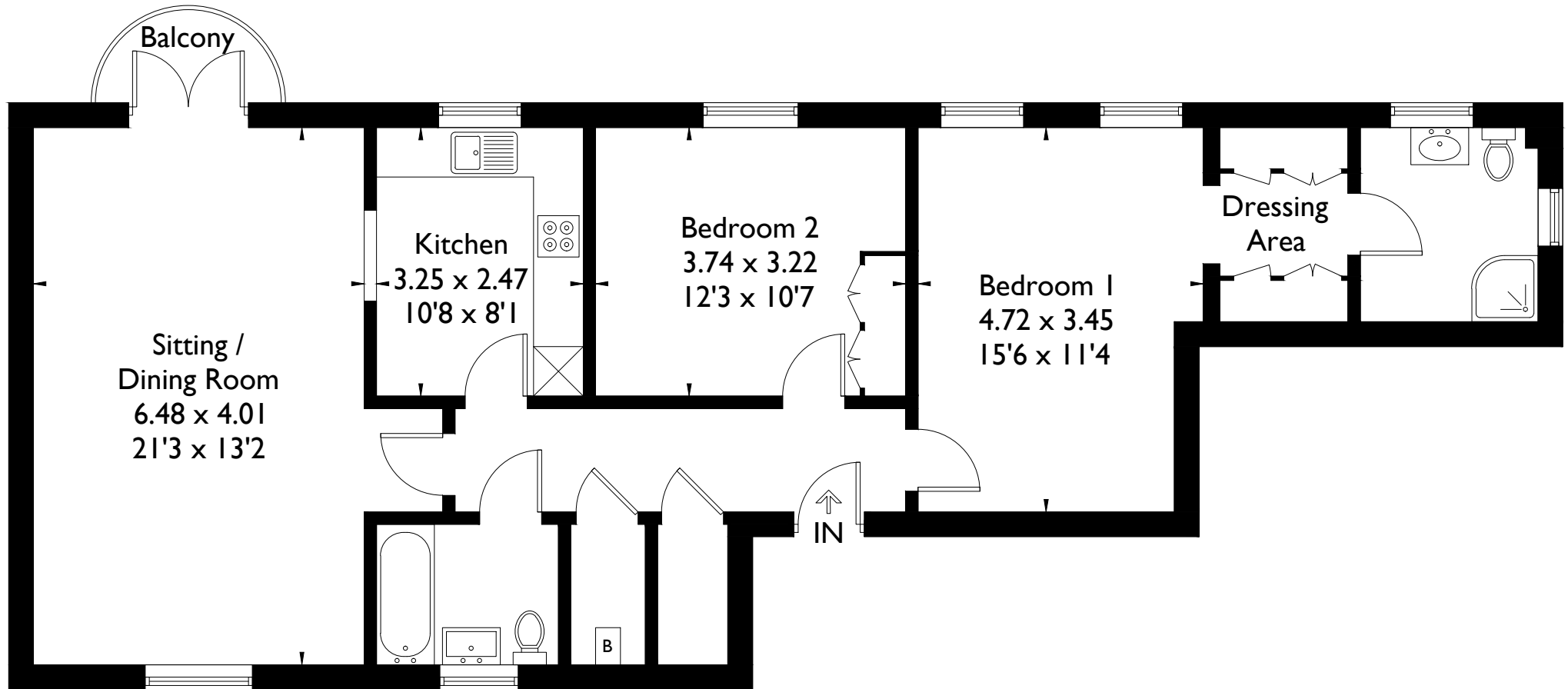


# 17 Telford Court, Old College Road, Newbury, RG14 1TF

Approximate Gross Internal Area = 90.4 sq m / 973 sq ft



## First Floor

FLOORPLANZ © 2018 0203 9056099 Ref:214574

This plan is for layout guidance only. Drawn in accordance with RICS guidelines. Not drawn to scale unless stated. Windows & door openings are approximate. Whilst every care is taken in the preparation of this plan, please check all dimensions, shapes & compass bearings before making any decisions reliant upon them.