

# 10 Marston Drive, Newbury, RG14 2SG

Approximate Gross Internal Area = 57.1 sq m / 615 sq ft

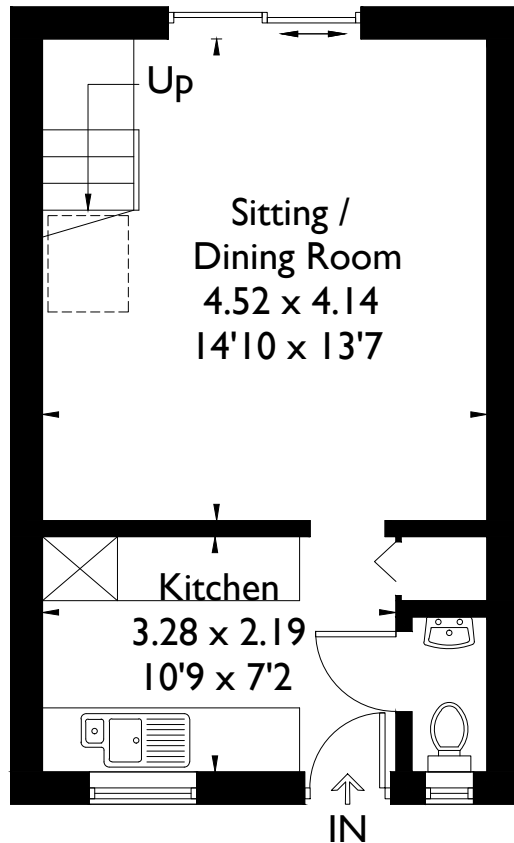
Garage = 13.5 sq m / 145 sq ft

Office = 5.0 sq m / 54 sq ft

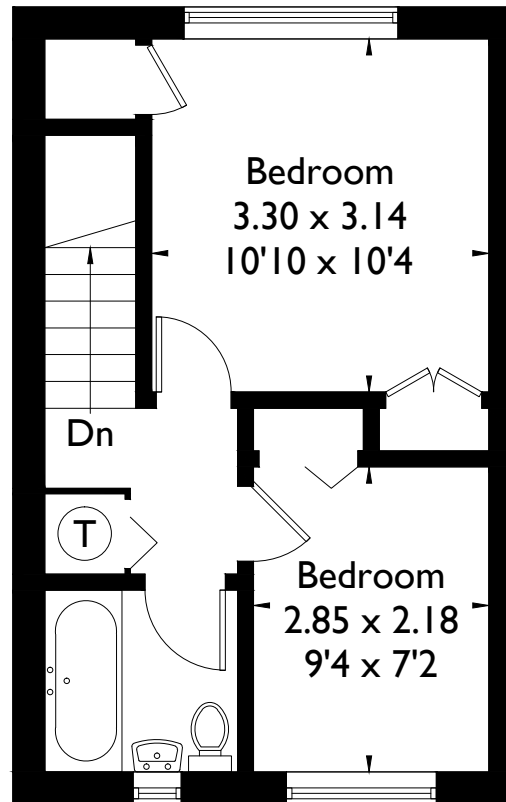
Total = 75.6 sq m / 814 sq ft



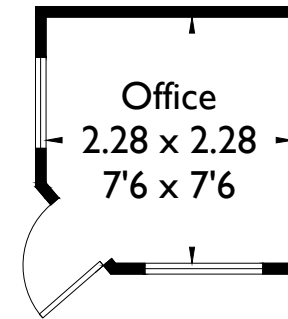
= Reduced headroom below 1.5m / 5'0



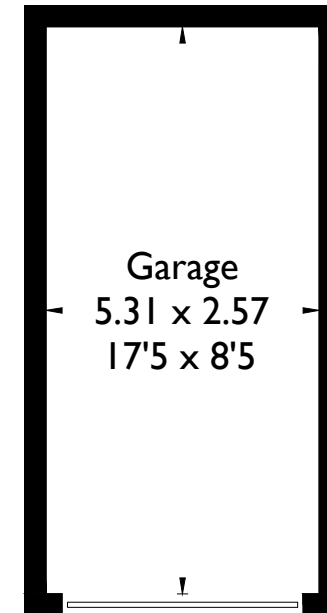
Ground Floor



First Floor



(Not Shown In Actual Location / Orientation)



(Not Shown In Actual Location / Orientation)

FLOORPLANZ © 2018 0203 9056099 Ref: 219099

This plan is for layout guidance only. Drawn in accordance with RICS guidelines. Not drawn to scale unless stated. Windows & door openings are approximate. Whilst every care is taken in the preparation of this plan, please check all dimensions, shapes & compass bearings before making any decisions reliant upon them.