

Briars, Broadlayings, Woolton Hill, Newbury, RG20 9TU

Approximate Gross Internal Area = 108.0 sq m / 1162 sq ft

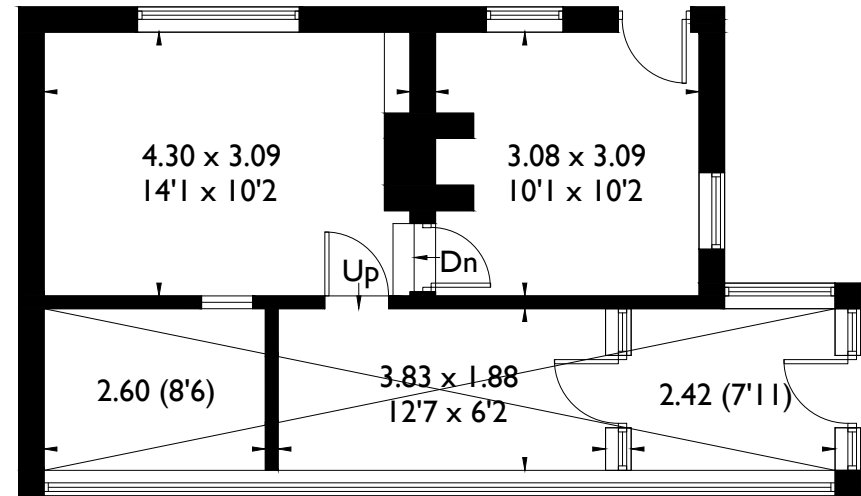
Outbuilding = 42.6 sq m / 459 sq ft

Total = 150.6 sq m / 1621 sq ft

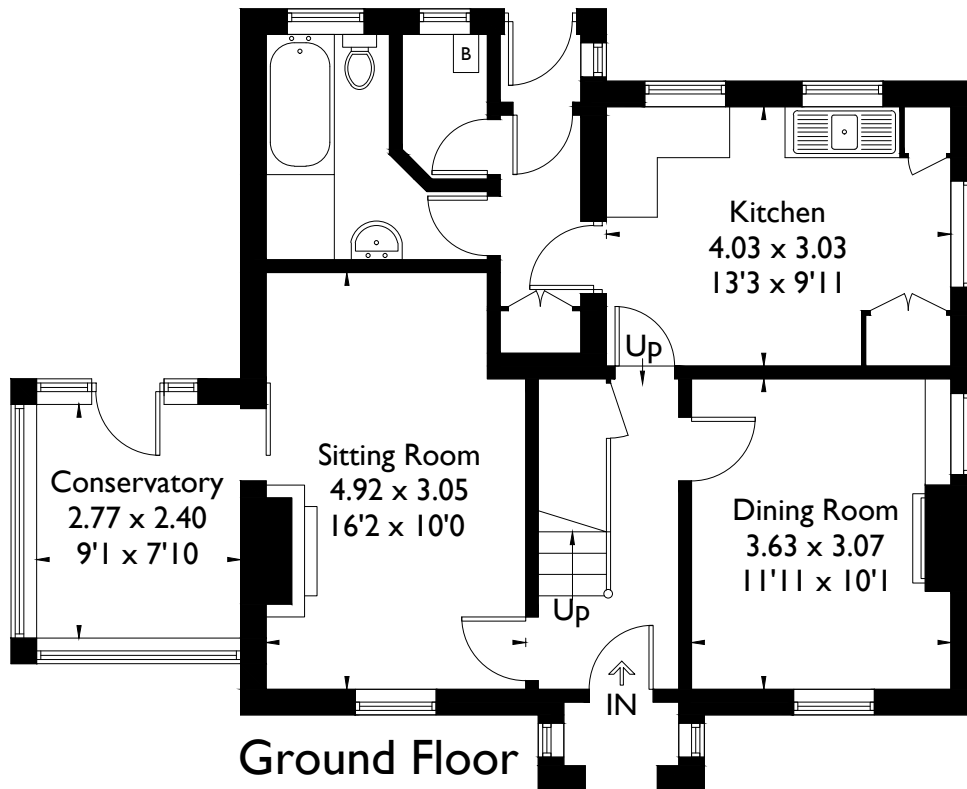


Floorplanz © 2015
0845 6344080 Ref: 153631

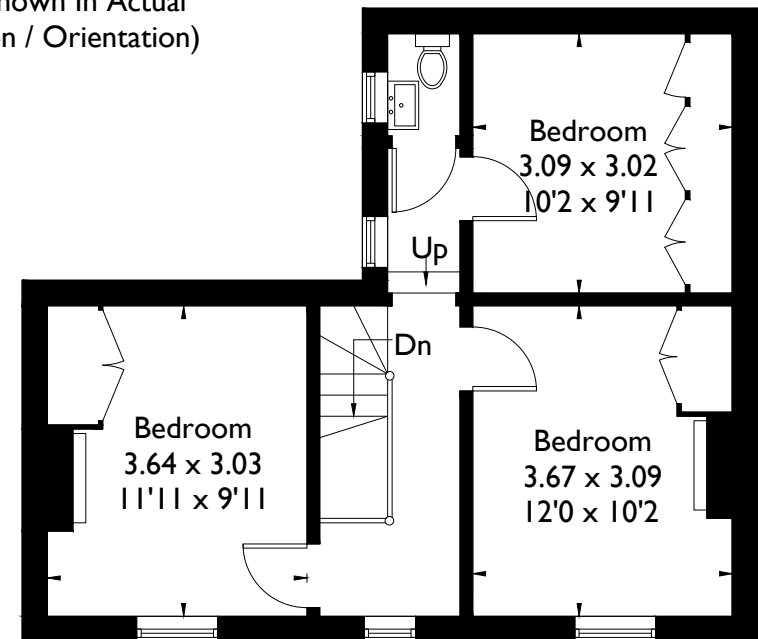
This plan is for layout guidance only.
Drawn in accordance with
RICS guidelines. Not drawn to
scale, unless stated. Windows &
door openings are approximate.
Whilst every care is taken in the
preparation of this plan, please check
all dimensions, shapes & compass
bearings before making any
decisions reliant upon them.



Outbuilding
(Not Shown In Actual
Location / Orientation)



Ground Floor



First Floor